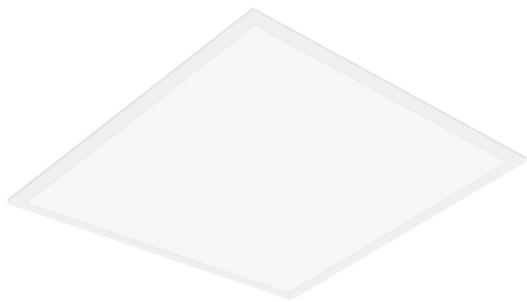


PRODUCT DATASHEET

PANEL VAL 600 UGR < 19 WT

PANEL VALUE 600 UGR < 19 | Square recessed panel luminaires with low glare, 600x600 mm



AREAS OF APPLICATION

- Direct replacement for luminaires with fluorescent lamps
- Offices, conference rooms
- Reception areas, foyers, corridors, elevators
- Suitable for recessed ceiling systems with grid size of 600 x 600 mm

PRODUCT BENEFITS

- Value for money luminaire
- Good glare reduction (UGR < 19)
- Low flicker light thanks to special electronic control gear
- Energy savings thanks to system efficacy of up to 100 lm/W
- External driver for extended flexibility and easy installation
- Versions with DALI ECG available

PRODUCT FEATURES

- Lifetime (L70/B50): up to 50,000 h (at 25 °C)
- Extruded aluminum frame
- Polystyrene diffuser



TECHNICAL DATA

Electrical data

Power factor λ	> 0.90
Max. no. of lum. on circuit break. B16 A	19
Max. no. of lum. on circuit break. C10 A	19
Max. no. of lum. on circuit break. C16 A	30
Inrush current	10.4 A
Total harmonic distortion	< 15 %
Inrush current time T_{h50}	200 μ s

Luminaire control gear data

Low flicker	Yes
ECG - Output ripple current	≤ 5 %

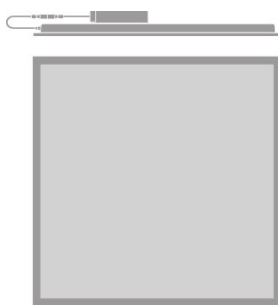
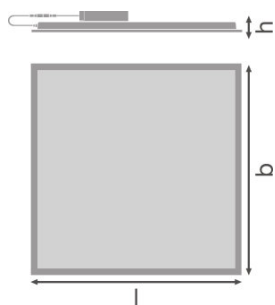
Photometrical data

Light color (designation)	Cool White
Standard deviation of color matching	5 sdcn

Light technical data

UGR lateral	<19
UGR longitudinal	<19

Dimensions & weight



Product weight	1800.00 g
Mounting width	580.0 mm
Mounting length	580.0 mm

Colors & materials

Light emitting surface material	Polystyrene
---------------------------------	-------------

Temperatures & operating conditions

Ambient temperature range	-10...+45 °C
---------------------------	--------------

Lifespan

Number of switching cycles	25000
Lifespan L70/B50 at 25 °C	50000 h
Lifespan L80/B10 at 25 °C	50000 h
Lifespan L90/B10 at 25 °C	30000 h

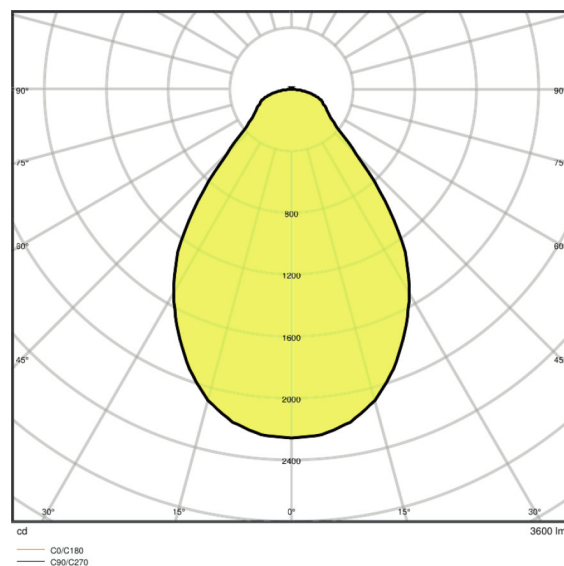
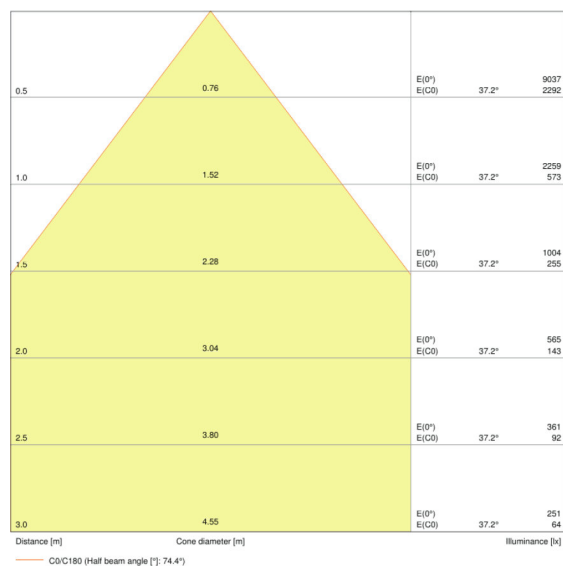
Additional product data

Mounting location	Ceiling / Wall
Low flicker	Yes
Product remark	Available from February 2020

Certificates & standards

Protection class IK (shock resistance)	IK02
Glow Wire Test according to IEC 60695-2-12	650 °C
Photobiological safety group EN62778	RG 0
Standards	CE/CB/EAC/RoHS

Light Distribution



LDC typ cone

LDC typ polar

EQUIPMENT / ACCESSORIES

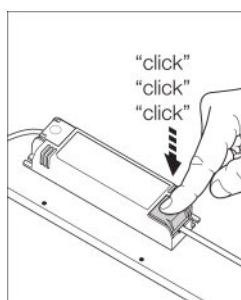
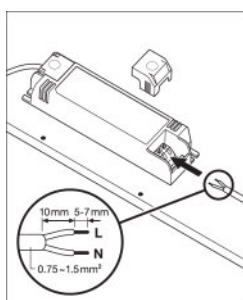
- Accessories for several mounting options available
- External control gear included
- Security brackets included

LOGISTICAL DATA

Product code	Packaging unit (Pieces/Unit)	Dimensions (length x width x height)	Gross weight	Volume
4058075392427	Folding carton box 1	602 mm x 40 mm x 648 mm	2192.00 g	15.60 dm ³
4058075392434	Shipping carton box 4	667 mm x 182 mm x 634 mm	10015.00 g	76.96 dm ³

The mentioned product code describes the smallest quantity unit which can be ordered. One shipping unit can contain one or more single products. When placing an order, for the quantity please enter single or multiples of a shipping unit.

ADDITIONAL CATALOG INFORMATION



REFERENCES / LINKS

For Guarantee see

► www.ledvance.com/guarantee

DISCLAIMER

Subject to change without notice. Errors and omission excepted. Always make sure to use the most recent release.